



**FAIRBURNS  
GROUP**

**Total Electrical Solutions**

## **Jupiter LED Street Light Range**

*Jupiter 24 XL110 AC  
Jupiter 24 XL110 DC*

*Jupiter 36 XL110 AC  
Jupiter 36 XL110 DC*

*Jupiter 48 XL110 AC  
Jupiter 48 XL110 DC*

*Jupiter 60 XL110 AC  
Jupiter 60 XL110 DC*

# **Jupiter 60 XL110 - LED Street Light**

The **Jupiter 60 XL110** luminaire is a street and area lamp ready for connection to either AC mains power supply or our Mercury solar power management unit, which provides a flexible lighting solution where mains power is not available or desired.

The Jupiter 60 XL110 is ideal for lighting streets, car parks, pathways and public areas.



Note: All LEDs are encased in a compound that will give them protection from any ingress of liquids or solids and all other electronic components are enclosed in an IP66 rated assembly.

### **Key Benefits of LED Lighting:**

- Long life span > 50,000hrs.
- Low Power Consumption.
- Low maintenance costs.
- No Bulb replacements.
- More power to light than power to heat.
- Low carbon emissions.
- Excellent colour rendition.
- Fixtures contain no mercury or lead.
- Reduced Light pollution.
- Higher Efficacy = More lumens per watt.

### **Added Benefits for Car Parks:**

- Solar Power options available where mains electricity is uneconomic.
- Pure Light – Excellent visual acuity. Ideal for CCTV covered areas.
- LED's create a white light similar to daylight allowing customers to locate their cars more efficiently.
- No light pollution into neighbouring properties.
- LED's strike instantly allowing lighting to be turned off in periods of inactivity and activated again with motion sensors.
- Impact resistant casing reduces the effects of vandalism.

### **FAIRBURNS GROUP LIMITED**

73 – 79 Clarence Street  
Hull  
HU9 1DH

Tel: +44 (0) 1482 323 352

Fax: +44 (0) 1482 229 873





**FAIRBURNS  
GROUP**

Total Electrical Solutions

**Jupiter LED Street  
Light Range**

Jupiter 24 XL110 AC  
Jupiter 24 XL110 DC

Jupiter 36 XL110 AC  
Jupiter 36 XL110 DC

Jupiter 48 XL110 AC  
Jupiter 48 XL110 DC

Jupiter 60 XL110 AC  
Jupiter 60 XL110 DC

**FAIRBURNS GROUP  
LIMITED**

73 – 79 Clarence Street  
Hull  
HU9 1DH

Tel: +44 (0) 1482 323 352  
Fax: +44 (0) 1482 229 873



# Jupiter 60 XL110 - LED Street Light

**Specifications: Jupiter 60 XL110 - LED Street Light**

	<b>AC</b>	<b>DC</b>
<b>Product Code</b>	J60-A001-C2 / FE	J60-D001-B2 / FE
<b>Power Consumption LED's</b>	68.04 Watts	
<b>Power Consumption Driver</b>	11.5 Watts	N/A
<b>Total Power Consumption</b>	79.54 Watts	68.04 Watts
<b>Input Voltage</b>	90 – 264Vac	12 VDC
<b>Input Frequency</b>	47 – 63Hz	N/A
<b>Light Source</b>	1.14W High Power LED	
<b>LED QTY</b>	60	
<b>Total LED Output</b>	6600 lm	
<b>Efficiency (Typ.)</b>	85%	
<b>LED Colour</b>	Cool White	
<b>Colour Temp (K)</b>	6300 degrees K	
<b>CRI</b>	Ra>70	
<b>LED Lifespan</b>	50,000 > 80,000 Hours	
<b>Operating Temperature</b>	-30 degrees C to + 50 degrees C	
<b>Working Humidity</b>	0 ~ 95%	
<b>Turn on time</b>	100ns	
<b>Product Size (mm)</b>	865 x 300 x 100	
<b>Unit colour</b>	Silver	
<b>Net Weight</b>	8.55 Kg	
<b>Mounting</b>	Supplied with adjustable 'C' type clamps for Outreach Mounting Arms with a Min of 43mmØ and Max of 56mmØ (Standard)	
<b>Protection Rate</b>	IP66 (Light Engine & Power Supply)	
<b>Certification</b>	RoHS, CE	
<b>Charging code for Un-metered Supply</b>	4000650	
<b>Warranty</b>	3 Years	



**FAIRBURNS  
GROUP**

**Total Electrical Solutions**

**Jupiter LED Street  
Light Range**

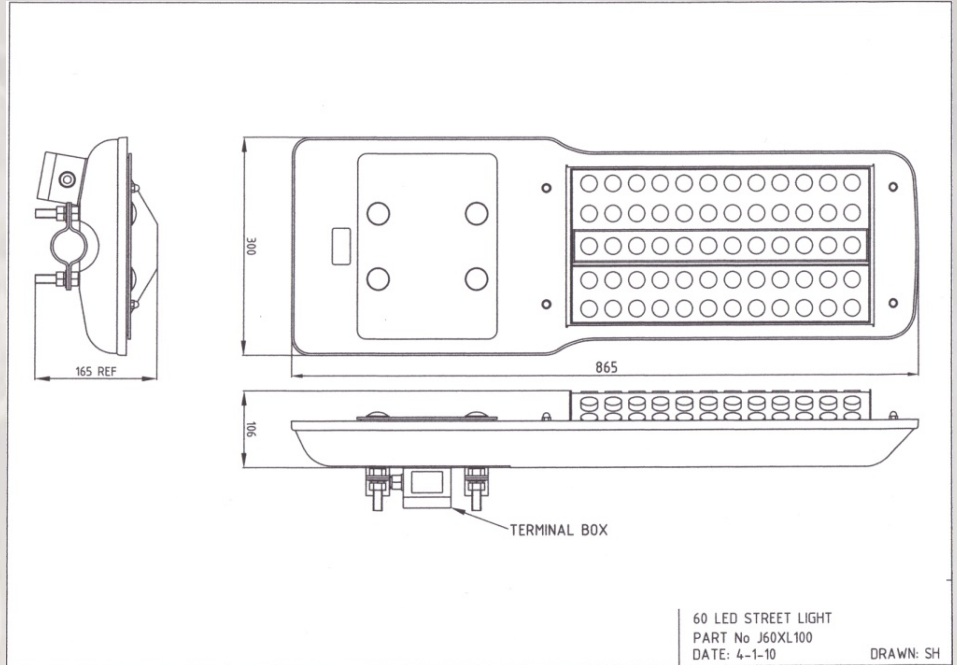
*Jupiter 24 XL110 AC  
Jupiter 24 XL110 DC*

*Jupiter 36 XL110 AC  
Jupiter 36 XL110 DC*

*Jupiter 48 XL110 AC  
Jupiter 48 XL110 DC*

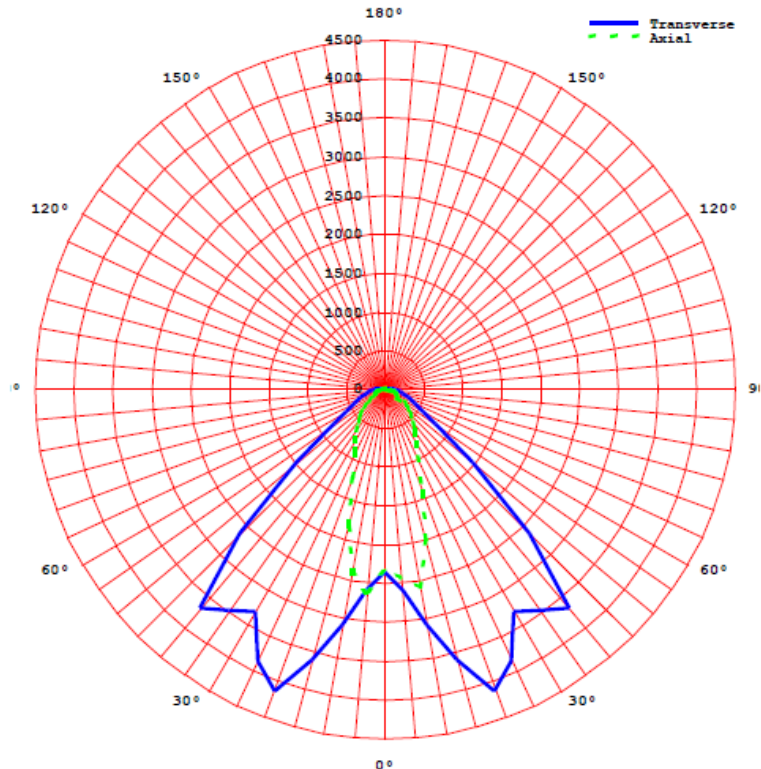
*Jupiter 60 XL110 AC  
Jupiter 60 XL110 DC*

# Jupiter 60 XL110 - LED Street Light



Above: CAD diagram for Jupiter 60 XL110 – LED Street Light

Average Principal Axes Luminous Intensities (cd)



Above: Average Principal Axes Luminous Intensities (cd)

**FAIRBURNS GROUP  
LIMITED**

73 – 79 Clarence Street  
Hull  
HU9 1DH

Tel: +44 (0) 1482 323 352

Fax: +44 (0) 1482 229 873

