



FAIRBURNS GROUP

Total Electrical Solutions

Jupiter LED Street Light Range

Jupiter 24 XL110 AC
Jupiter 24 XL110 DC

Jupiter 36 XL110 AC
Jupiter 36 XL110 DC

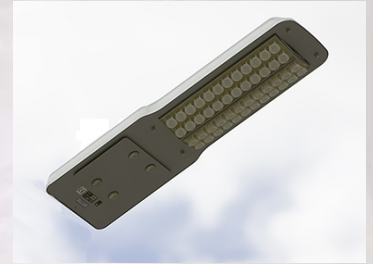
Jupiter 48 XL110 AC
Jupiter 48 XL110 DC

Jupiter 60 XL110 AC
Jupiter 60 XL110 DC

Jupiter 48 XL110 - LED Street Light

The **Jupiter 48 XL110** luminaire is a street and area lamp ready for connection to either AC mains power supply or our Mercury solar power management unit, which provides a flexible lighting solution where mains power is not available or desired.

The Jupiter 48 XL110 is ideal for lighting streets, car parks, pathways and public areas.



Note: All LEDs are encased in a compound that will give them protection from any ingress of liquids or solids and all other electronic components are enclosed in an IP66 rated assembly.

Key Benefits of LED Lighting:

- Long life span > 50,000hrs.
- Low Power Consumption.
- Low maintenance costs.
- No Bulb replacements.
- More power to light than power to heat.
- Low carbon emissions.
- Excellent colour rendition.
- Fixtures contain no mercury or lead.
- Reduced Light pollution.
- Higher Efficacy = More lumens per watt.

Added Benefits for Car Parks:

- Solar Power options available where mains electricity is uneconomic.
- Pure Light – Excellent visual acuity. Ideal for CCTV covered areas.
- LED's create a white light similar to daylight allowing customers to locate their cars more efficiently.
- No light pollution into neighbouring properties.
- LED's strike instantly allowing lighting to be turned off in periods of inactivity and activated again with motion sensors.
- Impact resistant casing reduces the effects of vandalism.

FAIRBURNS GROUP LIMITED

73 – 79 Clarence Street
Hull
HU9 1DH

Tel: +44 (0) 1482 323 352
Fax: +44 (0) 1482 229 873





**FAIRBURNS
GROUP**

Total Electrical Solutions

**Jupiter LED Street
Light Range**

Jupiter 24 XL110 AC
Jupiter 24 XL110 DC

Jupiter 36 XL110 AC
Jupiter 36 XL110 DC

Jupiter 48 XL110 AC
Jupiter 48 XL110 DC

Jupiter 60 XL110 AC
Jupiter 60 XL110 DC

**FAIRBURNS GROUP
LIMITED**

73 – 79 Clarence Street
Hull
HU9 1DH

Tel: +44 (0) 1482 323 352
Fax: +44 (0) 1482 229 873



Jupiter 48 XL110 - LED Street Light

Specifications: Jupiter 48 XL110 - LED Street Light

	AC	DC
Product Code	J48-A001-E2 / FE	J48-D001-D2 / FE
Power Consumption LED's	54.72 Watts	
Power Consumption Driver	9 Watts	N/A
Total Power Consumption	63.72 Watts	54.72 Watts
Input Voltage	90 – 264Vac	12 VDC
Input Frequency	47 – 63Hz	N/A
Light Source	1.14W High Power LED	
LED QTY	48	
Total LED Output	5280 lm	
Efficiency (Typ.)	85%	
LED Colour	Cool White	
Colour Temp (K)	6300 degrees K	
CRI	Ra>70	
LED Lifespan	50,000 > 80,000 Hours	
Operating Temperature	-30 degrees C to + 50 degrees C	
Working Humidity	0 ~ 95%	
Turn on time	100ns	
Product Size (mm)	865 x 300 x 100	
Unit colour	Silver	
Net Weight	8.55 Kg	
Mounting	Supplied with adjustable 'C' type clamps for Outreach Mounting Arms with a Min of 43mmØ and Max of 56mmØ (Standard)	
Protection Rate	IP66 (Light Engine & Power Supply)	
Certification	RoHS, CE	
Charging code for Un-metered Supply	4000650	
Warranty	3 Years	



FAIRBURNS GROUP

Total Electrical Solutions

Jupiter LED Street Light Range

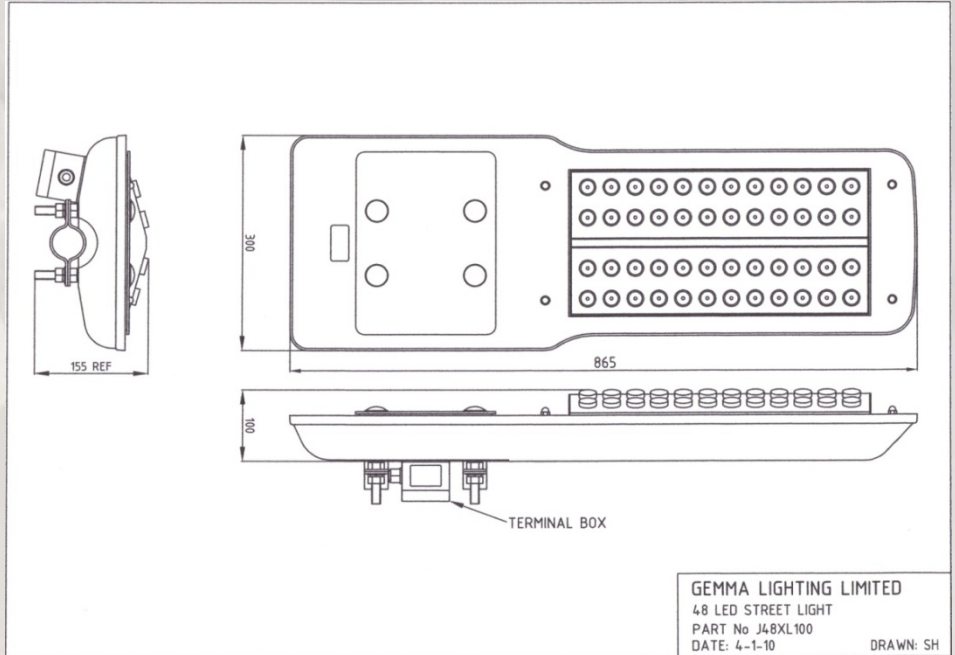
*Jupiter 24 XL110 AC
Jupiter 24 XL110 DC*

*Jupiter 36 XL110 AC
Jupiter 36 XL110 DC*

*Jupiter 48 XL110 AC
Jupiter 48 XL110 DC*

*Jupiter 60 XL110 AC
Jupiter 60 XL110 DC*

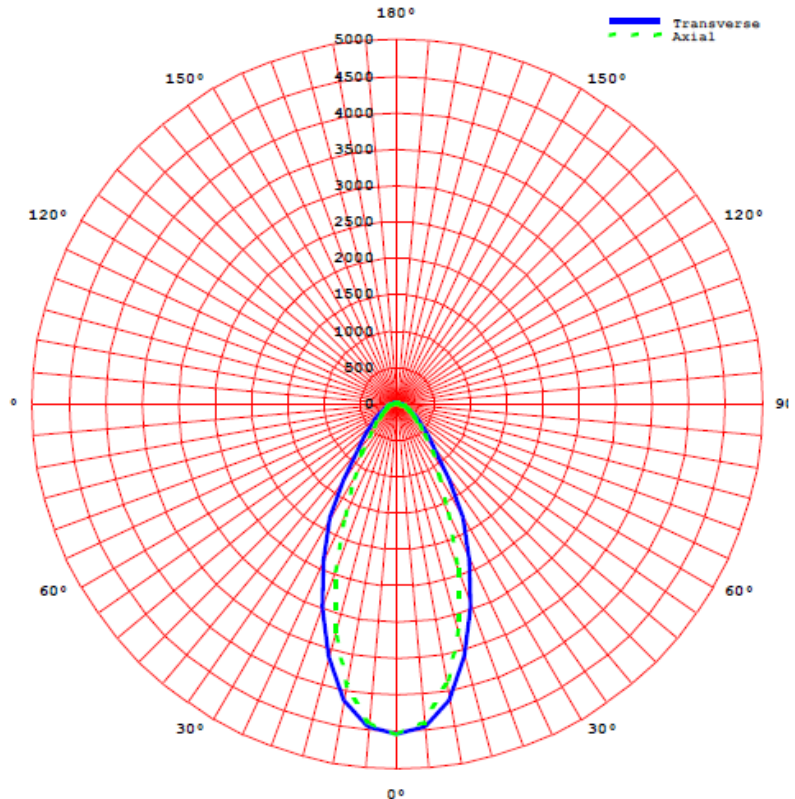
Jupiter 48 XL110 - LED Street Light



GEMMA LIGHTING LIMITED
 48 LED STREET LIGHT
 PART No J48XL100
 DATE: 4-1-10
 DRAWN: SH

Above: CAD diagram for Jupiter 48 XL110 – LED Street Light

Average Principal Axes Luminous Intensities (cd)



Above: Average Principal Axes Luminous Intensities (cd)

FAIRBURNS GROUP LIMITED

73 – 79 Clarence Street
Hull
HU9 1DH

Tel: +44 (0) 1482 323 352

Fax: +44 (0) 1482 229 873

